

Piccolo

OkMEA Scale Sets

Set 1

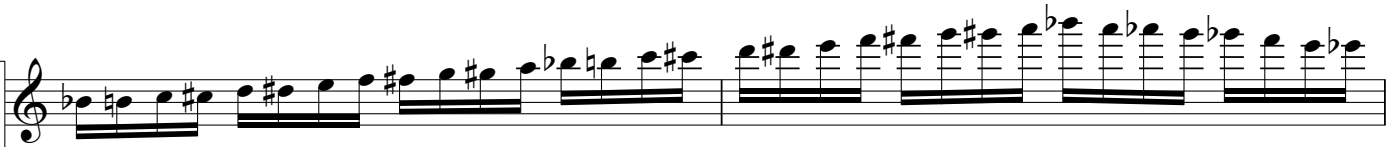
Concert
A



Concert
Db



Concert
Bb
Chromatic



Set 2

Concert
D



Concert
Gb



Concert
Bb
Chromatic



Piccolo

Set 3

Concert
G

Concert
B

Concert
Bb
Chromatic

Set 4

Concert
C

Concert
E

Concert
Bb
Chromatic

OMEA Scale Sets

Flute

Set 1

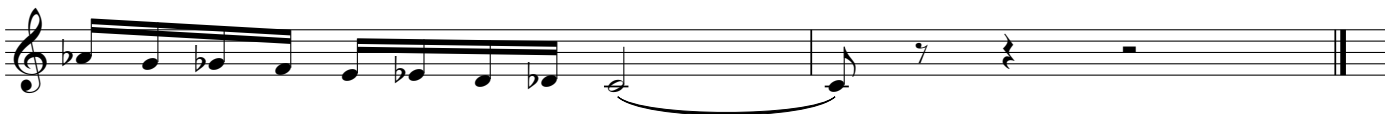
Concert
A



Concert
Db



Concert
C
Chromatic



Set 2

Concert
D



Concert
Gb



Concert
C
Chromatic



Flute

Set 3

Concert
G

Musical staff for Concert G, Set 3. The staff is in treble clef with a key signature of one sharp (F#). The melody consists of eighth and sixteenth notes, starting on G4 and ascending to A5, then descending back to G4. The piece ends with a quarter rest.

Concert
B

Musical staff for Concert B, Set 3. The staff is in treble clef with a key signature of three sharps (F#, C#, G#). The melody consists of eighth and sixteenth notes, starting on B4 and ascending to D6, then descending back to B4. The piece ends with a quarter rest.

Concert
C
Chromatic

Musical staff for Concert C Chromatic, Set 3. The staff is in treble clef with a key signature of one sharp (F#). The melody is a chromatic scale starting on C4 and ascending to C6, then descending back to C4. The piece ends with a quarter rest.

Set 4

Concert
C

Musical staff for Concert C, Set 4. The staff is in treble clef with a key signature of one sharp (F#). The melody consists of eighth and sixteenth notes, starting on C4 and ascending to D5, then descending back to C4. The piece ends with a quarter rest.

Concert
E

Musical staff for Concert E, Set 4. The staff is in treble clef with a key signature of three sharps (F#, C#, G#). The melody consists of eighth and sixteenth notes, starting on E4 and ascending to G6, then descending back to E4. The piece ends with a quarter rest.

Concert
C
Chromatic

Musical staff for Concert C Chromatic, Set 4. The staff is in treble clef with a key signature of one sharp (F#). The melody is a chromatic scale starting on C4 and ascending to C6, then descending back to C4. The piece ends with a quarter rest.

2

Set 3

Concert
G

25

Concert
B

28

Concert
C
Chromatic

33

35

Set 4

Concert
C

37

Concert
E

42

Concert
C
Chromatic

45

47

Bassoon

OkMEA Scale Sets

Set 1

Concert
A



Bassoon

Set 3

Concert G



Musical staff for Concert G, Set 3. The staff is in bass clef with a key signature of one sharp (F#). The melody consists of a series of eighth notes, starting on G2 and ascending to G4, followed by a descending eighth-note scale back to G2, and ending with a quarter rest.

Concert B



Musical staff for Concert B, Set 3. The staff is in bass clef with a key signature of three sharps (F#, C#, G#). The melody consists of a series of eighth notes, starting on B2 and ascending to B4, followed by a descending eighth-note scale back to B2, and ending with a quarter rest.

Concert F Chromatic



Musical staff for Concert F Chromatic, Set 3. The staff is in bass clef with a key signature of one sharp (F#). The melody is a chromatic scale starting on F#2 and ascending to F#4, followed by a descending chromatic scale back to F#2, and ending with a quarter rest.



Musical staff for Concert F Chromatic, Set 3 (continued). The staff is in bass clef with a key signature of one sharp (F#). The melody is a chromatic scale starting on F#2 and ascending to F#4, followed by a descending chromatic scale back to F#2, and ending with a quarter rest.

Set 4

Concert C



Musical staff for Concert C, Set 4. The staff is in bass clef with a key signature of no sharps or flats. The melody consists of a series of eighth notes, starting on C2 and ascending to C4, followed by a descending eighth-note scale back to C2, and ending with a quarter rest.

Concert E



Musical staff for Concert E, Set 4. The staff is in bass clef with a key signature of three sharps (F#, C#, G#). The melody consists of a series of eighth notes, starting on E2 and ascending to E4, followed by a descending eighth-note scale back to E2, and ending with a quarter rest.

Concert F Chromatic



Musical staff for Concert F Chromatic, Set 4. The staff is in bass clef with a key signature of one sharp (F#). The melody is a chromatic scale starting on F#2 and ascending to F#4, followed by a descending chromatic scale back to F#2, and ending with a quarter rest.



Musical staff for Concert F Chromatic, Set 4 (continued). The staff is in bass clef with a key signature of one sharp (F#). The melody is a chromatic scale starting on F#2 and ascending to F#4, followed by a descending chromatic scale back to F#2, and ending with a quarter rest.

OkMEA Scale Sets

Clarinet in E \flat

Set 1

Concert
A



Clarinet in Eb
Set 3

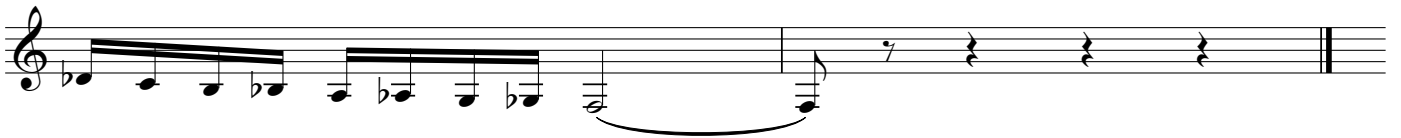
Concert
G



Concert
C



Concert
Ab
Chromatic



Set 4

Concert
C



Concert
Fb



Concert
Ab
Chromatic



Clarinet in B \flat

OkMEA Scale Sets

Set 1

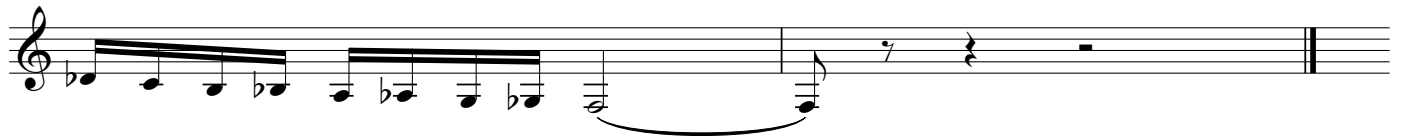
Concert
A



Concert
D \flat



Concert
E \flat
Chromatic



Set 2

Concert
D



Concert
G \flat



Concert
E \flat
Chromatic



Clarinet in Bb

Set 3

Concert G

Concert Cb

Concert Eb Chromatic

Set 4

Concert C

Concert E

Concert Eb Chromatic

Bass Clarinet in B \flat

OkMEA Scale Sets

Set 1

Concert A

Concert Db

Concert Eb Chromatic

Set 2

Concert D

Concert Gb

Concert Eb Chromatic

Bass Clarinet in B \flat

Set 3

Concert G

Concert C \flat

Concert Eb Chromatic

Set 4

Concert C

Concert E

Concert Eb Chromatic

Contra Alto Clarinet in E \flat

OkMEA Scale Sets

Set 1

Concert
A

Concert
Db

Concert
Ab
Chromatic

Set 2

Concert
D

Concert
Gb

Concert
Ab
Chromatic

Contra Alto Clarinet in E \flat

Set 3

Concert G

Concert C \flat

Concert A \flat
Chromatic

Set 4

Concert C

Concert F

Concert A \flat
Chromatic

Contrabass Clarinet in B \flat

Set 3

Concert G

Concert C \flat

Concert E \flat
Chromatic

Set 4

Concert C

Concert E

Concert E \flat
Chromatic

Alto Saxophone

Set 3

Concert G

Musical staff for Concert G, Alto Saxophone. The staff is in treble clef with a key signature of three sharps (F#, C#, G#). The melody consists of eighth and quarter notes, ending with a quarter rest.

Concert Cb

Musical staff for Concert Cb, Alto Saxophone. The staff is in treble clef with a key signature of three flats (Bb, Fb, Cb). The melody consists of eighth and quarter notes, ending with a quarter rest.

Concert Eb Chromatic

Musical staff for Concert Eb Chromatic, Alto Saxophone. The staff is in treble clef with a key signature of three flats (Bb, Fb, Cb). The melody is a chromatic scale consisting of eighth notes, ending with a quarter rest.

Musical staff for Concert Eb Chromatic, Alto Saxophone. The staff is in treble clef with a key signature of three flats (Bb, Fb, Cb). The melody is a chromatic scale consisting of eighth notes, ending with a quarter rest.

Set 4

Concert C

Musical staff for Concert C, Alto Saxophone. The staff is in treble clef with a key signature of one sharp (F#). The melody consists of eighth and quarter notes, ending with a quarter rest.

Concert Fb

Musical staff for Concert Fb, Alto Saxophone. The staff is in treble clef with a key signature of four flats (Bbb, Fbb, Cbb, Gbb). The melody consists of eighth and quarter notes, ending with a quarter rest.

Concert Eb Chromatic

Musical staff for Concert Eb Chromatic, Alto Saxophone. The staff is in treble clef with a key signature of three flats (Bb, Fb, Cb). The melody is a chromatic scale consisting of eighth notes, ending with a quarter rest.

Musical staff for Concert Eb Chromatic, Alto Saxophone. The staff is in treble clef with a key signature of three flats (Bb, Fb, Cb). The melody is a chromatic scale consisting of eighth notes, ending with a quarter rest.

Tenor Saxophone

OkMEA Scale Sets

Set 1

Concert A

Tenor Saxophone

Set 3

Concert G

A musical staff in treble clef with a key signature of one sharp (F#). The melody consists of eighth and quarter notes, ending with a quarter rest.

Concert Cb

A musical staff in treble clef with a key signature of three flats (Bb, Eb, Ab). The melody consists of eighth and quarter notes, ending with a quarter rest.

Concert Bb Chromatic

A musical staff in treble clef with a key signature of two flats (Bb, Eb). The melody is a chromatic scale consisting of eighth notes, ending with a quarter rest.

A musical staff in treble clef with a key signature of two flats (Bb, Eb). The melody is a chromatic scale consisting of eighth notes, ending with a quarter rest.

Set 4

Concert C

A musical staff in treble clef with a key signature of one sharp (F#). The melody consists of eighth and quarter notes, ending with a quarter rest.

Concert E

A musical staff in treble clef with a key signature of three sharps (F#, C#, G#). The melody consists of eighth and quarter notes, ending with a quarter rest.

Concert Bb Chromatic

A musical staff in treble clef with a key signature of two flats (Bb, Eb). The melody is a chromatic scale consisting of eighth notes, ending with a quarter rest.

A musical staff in treble clef with a key signature of two flats (Bb, Eb). The melody is a chromatic scale consisting of eighth notes, ending with a quarter rest.

Trumpet in B \flat

OkMEA Scale Sets

Set 1

Concert A



Musical notation for Set 1, Concert A. The staff is in treble clef with a key signature of three sharps (F#, C#, G#). The scale consists of the notes: A4, B4, C5, D5, E5, F#5, G#5, A5, B5, C6, D6, E6, F#6, G#6, A6, B6, C7, D7, E7, F#7, G#7, A7, B7, C8, D8, E8, F#8, G#8, A8, B8, C9, D9, E9, F#9, G#9, A9, B9, C10, D10, E10, F#10, G#10, A10, B10, C11, D11, E11, F#11, G#11, A11, B11, C12, D12, E12, F#12, G#12, A12, B12, C13, D13, E13, F#13, G#13, A13, B13, C14, D14, E14, F#14, G#14, A14, B14, C15, D15, E15, F#15, G#15, A15, B15, C16, D16, E16, F#16, G#16, A16, B16, C17, D17, E17, F#17, G#17, A17, B17, C18, D18, E18, F#18, G#18, A18, B18, C19, D19, E19, F#19, G#19, A19, B19, C20, D20, E20, F#20, G#20, A20, B20, C21, D21, E21, F#21, G#21, A21, B21, C22, D22, E22, F#22, G#22, A22, B22, C23, D23, E23, F#23, G#23, A23, B23, C24, D24, E24, F#24, G#24, A24, B24, C25, D25, E25, F#25, G#25, A25, B25, C26, D26, E26, F#26, G#26, A26, B26, C27, D27, E27, F#27, G#27, A27, B27, C28, D28, E28, F#28, G#28, A28, B28, C29, D29, E29, F#29, G#29, A29, B29, C30, D30, E30, F#30, G#30, A30, B30, C31, D31, E31, F#31, G#31, A31, B31, C32, D32, E32, F#32, G#32, A32, B32, C33, D33, E33, F#33, G#33, A33, B33, C34, D34, E34, F#34, G#34, A34, B34, C35, D35, E35, F#35, G#35, A35, B35, C36, D36, E36, F#36, G#36, A36, B36, C37, D37, E37, F#37, G#37, A37, B37, C38, D38, E38, F#38, G#38, A38, B38, C39, D39, E39, F#39, G#39, A39, B39, C40, D40, E40, F#40, G#40, A40, B40, C41, D41, E41, F#41, G#41, A41, B41, C42, D42, E42, F#42, G#42, A42, B42, C43, D43, E43, F#43, G#43, A43, B43, C44, D44, E44, F#44, G#44, A44, B44, C45, D45, E45, F#45, G#45, A45, B45, C46, D46, E46, F#46, G#46, A46, B46, C47, D47, E47, F#47, G#47, A47, B47, C48, D48, E48, F#48, G#48, A48, B48, C49, D49, E49, F#49, G#49, A49, B49, C50, D50, E50, F#50, G#50, A50, B50, C51, D51, E51, F#51, G#51, A51, B51, C52, D52, E52, F#52, G#52, A52, B52, C53, D53, E53, F#53, G#53, A53, B53, C54, D54, E54, F#54, G#54, A54, B54, C55, D55, E55, F#55, G#55, A55, B55, C56, D56, E56, F#56, G#56, A56, B56, C57, D57, E57, F#57, G#57, A57, B57, C58, D58, E58, F#58, G#58, A58, B58, C59, D59, E59, F#59, G#59, A59, B59, C60, D60, E60, F#60, G#60, A60, B60, C61, D61, E61, F#61, G#61, A61, B61, C62, D62, E62, F#62, G#62, A62, B62, C63, D63, E63, F#63, G#63, A63, B63, C64, D64, E64, F#64, G#64, A64, B64, C65, D65, E65, F#65, G#65, A65, B65, C66, D66, E66, F#66, G#66, A66, B66, C67, D67, E67, F#67, G#67, A67, B67, C68, D68, E68, F#68, G#68, A68, B68, C69, D69, E69, F#69, G#69, A69, B69, C70, D70, E70, F#70, G#70, A70, B70, C71, D71, E71, F#71, G#71, A71, B71, C72, D72, E72, F#72, G#72, A72, B72, C73, D73, E73, F#73, G#73, A73, B73, C74, D74, E74, F#74, G#74, A74, B74, C75, D75, E75, F#75, G#75, A75, B75, C76, D76, E76, F#76, G#76, A76, B76, C77, D77, E77, F#77, G#77, A77, B77, C78, D78, E78, F#78, G#78, A78, B78, C79, D79, E79, F#79, G#79, A79, B79, C80, D80, E80, F#80, G#80, A80, B80, C81, D81, E81, F#81, G#81, A81, B81, C82, D82, E82, F#82, G#82, A82, B82, C83, D83, E83, F#83, G#83, A83, B83, C84, D84, E84, F#84, G#84, A84, B84, C85, D85, E85, F#85, G#85, A85, B85, C86, D86, E86, F#86, G#86, A86, B86, C87, D87, E87, F#87, G#87, A87, B87, C88, D88, E88, F#88, G#88, A88, B88, C89, D89, E89, F#89, G#89, A89, B89, C90, D90, E90, F#90, G#90, A90, B90, C91, D91, E91, F#91, G#91, A91, B91, C92, D92, E92, F#92, G#92, A92, B92, C93, D93, E93, F#93, G#93, A93, B93, C94, D94, E94, F#94, G#94, A94, B94, C95, D95, E95, F#95, G#95, A95, B95, C96, D96, E96, F#96, G#96, A96, B96, C97, D97, E97, F#97, G#97, A97, B97, C98, D98, E98, F#98, G#98, A98, B98, C99, D99, E99, F#99, G#99, A99, B99, C100, D100, E100, F#100, G#100, A100, B100, C101, D101, E101, F#101, G#101, A101, B101, C102, D102, E102, F#102, G#102, A102, B102, C103, D103, E103, F#103, G#103, A103, B103, C104, D104, E104, F#104, G#104, A104, B104, C105, D105, E105, F#105, G#105, A105, B105, C106, D106, E106, F#106, G#106, A106, B106, C107, D107, E107, F#107, G#107, A107, B107, C108, D108, E108, F#108, G#108, A108, B108, C109, D109, E109, F#109, G#109, A109, B109, C110, D110, E110, F#110, G#110, A110, B110, C111, D111, E111, F#111, G#111, A111, B111, C112, D112, E112, F#112, G#112, A112, B112, C113, D113, E113, F#113, G#113, A113, B113, C114, D114, E114, F#114, G#114, A114, B114, C115, D115, E115, F#115, G#115, A115, B115, C116, D116, E116, F#116, G#116, A116, B116, C117, D117, E117, F#117, G#117, A117, B117, C118, D118, E118, F#118, G#118, A118, B118, C119, D119, E119, F#119, G#119, A119, B119, C120, D120, E120, F#120, G#120, A120, B120, C121, D121, E121, F#121, G#121, A121, B121, C122, D122, E122, F#122, G#122, A122, B122, C123, D123, E123, F#123, G#123, A123, B123, C124, D124, E124, F#124, G#124, A124, B124, C125, D125, E125, F#125, G#125, A125, B125, C126, D126, E126, F#126, G#126, A126, B126, C127, D127, E127, F#127, G#127, A127, B127, C128, D128, E128, F#128, G#128, A128, B128, C129, D129, E129, F#129, G#129, A129, B129, C130, D130, E130, F#130, G#130, A130, B130, C131, D131, E131, F#131, G#131, A131, B131, C132, D132, E132, F#132, G#132, A132, B132, C133, D133, E133, F#133, G#133, A133, B133, C134, D134, E134, F#134, G#134, A134, B134, C135, D135, E135, F#135, G#135, A135, B135, C136, D136, E136, F#136, G#136, A136, B136, C137, D137, E137, F#137, G#137, A137, B137, C138, D138, E138, F#138, G#138, A138, B138, C139, D139, E139, F#139, G#139, A139, B139, C140, D140, E140, F#140, G#140, A140, B140, C141, D141, E141, F#141, G#141, A141, B141, C142, D142, E142, F#142, G#142, A142, B142, C143, D143, E143, F#143, G#143, A143, B143, C144, D144, E144, F#144, G#144, A144, B144, C145, D145, E145, F#145, G#145, A145, B145, C146, D146, E146, F#146, G#146, A146, B146, C147, D147, E147, F#147, G#147, A147, B147, C148, D148, E148, F#148, G#148, A148, B148, C149, D149, E149, F#149, G#149, A149, B149, C150, D150, E150, F#150, G#150, A150, B150, C151, D151, E151, F#151, G#151, A151, B151, C152, D152, E152, F#152, G#152, A152, B152, C153, D153, E153, F#153, G#153, A153, B153, C154, D154, E154, F#154, G#154, A154, B154, C155, D155, E155, F#155, G#155, A155, B155, C156, D156, E156, F#156, G#156, A156, B156, C157, D157, E157, F#157, G#157, A157, B157, C158, D158, E158, F#158, G#158, A158, B158, C159, D159, E159, F#159, G#159, A159, B159, C160, D160, E160, F#160, G#160, A160, B160, C161, D161, E161, F#161, G#161, A161, B161, C162, D162, E162, F#162, G#162, A162, B162, C163, D163, E163, F#163, G#163, A163, B163, C164, D164, E164, F#164, G#164, A164, B164, C165, D165, E165, F#165, G#165, A165, B165, C166, D166, E166, F#166, G#166, A166, B166, C167, D167, E167, F#167, G#167, A167, B167, C168, D168, E168, F#168, G#168, A168, B168, C169, D169, E169, F#169, G#169, A169, B169, C170, D170, E170, F#170, G#170, A170, B170, C171, D171, E171, F#171, G#171, A171, B171, C172, D172, E172, F#172, G#172, A172, B172, C173, D173, E173, F#173, G#173, A173, B173, C174, D174, E174, F#174, G#174, A174, B174, C175, D175, E175, F#175, G#175, A175, B175, C176, D176, E176, F#176, G#176, A176, B176, C177, D177, E177, F#177, G#177, A177, B177, C178, D178, E178, F#178, G#178, A178, B178, C179, D179, E179, F#179, G#179, A179, B179, C180, D180, E180, F#180, G#180, A180, B180, C181, D181, E181, F#181, G#181, A181, B181, C182, D182, E182, F#182, G#182, A182, B182, C183, D183, E183, F#183, G#183, A183, B183, C184, D184, E184, F#184, G#184, A184, B184, C185, D185, E185, F#185, G#185, A185, B185, C186, D186, E186, F#186, G#186, A186, B186, C187, D187, E187, F#187, G#187, A187, B187, C188, D188, E188, F#188, G#188, A188, B188, C189, D189, E189, F#189, G#189, A189, B189, C190, D190, E190, F#190, G#190, A190, B190, C191, D191, E191, F#191, G#191, A191, B191, C192, D192, E192, F#192, G#192, A192, B192, C193, D193, E193, F#193, G#193, A193, B193, C194, D194, E194, F#194, G#194, A194, B194, C195, D195, E195, F#195, G#195, A195, B195, C196, D196, E196, F#196, G#196, A196, B196, C197, D197, E197, F#197, G#197, A197, B197, C198, D198, E198, F#198, G#198, A198, B198, C199, D199, E199, F#199, G#199, A199, B199, C200, D200, E200, F#200, G#200, A200, B200, C201, D201, E201, F#201, G#201, A201, B201, C202, D202, E202, F#202, G#202, A202, B202, C203, D203, E203, F#203, G#203, A203, B203, C204, D204, E204, F#204, G#204, A204, B204, C205, D205, E205, F#205, G#205, A205, B205, C206, D206, E206, F#206, G#206, A206, B206, C207, D207, E207, F#207, G#207, A207, B207, C208, D208, E208, F#208, G#208, A208, B208, C209, D209, E209, F#209, G#209, A209, B209, C210, D210, E210, F#210, G#210, A210, B210, C211, D211, E211, F#211, G#211, A211, B211, C212, D212, E212, F#212, G#212, A212, B212, C213, D213, E213, F#213, G#213, A213, B213, C214, D214, E214, F#214, G#214, A214, B214, C215, D215, E215, F#215, G#215, A215, B215, C216, D216, E216, F#216, G#216, A216, B216, C217, D217, E217, F#217, G#217, A217, B217, C218, D218, E218, F#218, G#218, A218, B218, C219, D219, E219, F#219, G#219, A219, B219, C220, D220, E220, F#220, G#220, A220, B220, C221, D221, E221, F#221, G#221, A221, B221, C222, D222, E222, F#222, G#222, A222, B222, C223, D223, E223, F#223, G#223, A223, B223, C224, D224, E224, F#224, G#224, A224, B224, C225, D225, E225, F#225, G#225, A225, B225, C226, D226, E226, F#226, G#226, A226, B226, C227, D227, E227, F#227, G#227, A227, B227, C228, D228, E228, F#228, G#228, A228, B228, C229, D229, E229, F#229, G#229, A229, B229, C230, D230, E230, F#230, G#230, A230, B230, C231, D231, E231, F#231, G#231, A231, B231, C232, D232, E232, F#232, G#232, A232, B232, C233, D233, E233, F#233, G#233, A233, B233, C234, D234, E234, F#234, G#234, A234, B234, C235, D235, E235, F#235, G#235, A235, B235, C236, D236, E236, F#236, G#236, A236, B236, C237, D237, E237, F#237, G#237, A237, B237, C238, D238, E238, F#238, G#238, A238, B238, C239, D239, E239, F#239, G#239, A239, B239, C240, D240, E240, F#240, G#240, A240, B240, C241, D241, E241, F#241, G#241, A241, B241, C242, D242, E242, F#242, G#242, A242, B242, C243, D243, E243, F#243, G#243, A243, B243, C244, D244, E244, F#244, G#244, A244, B244, C245, D245, E245, F#245, G#245, A245, B245, C246, D246, E246, F#246, G#246, A246, B246, C247, D247, E247, F#247, G#247, A247, B247, C248, D248, E248, F#248, G#248, A248, B248, C249, D249, E249, F#249, G#249, A249, B249, C250, D250, E250, F#250, G#250, A250, B250, C251, D251, E251, F#251, G#251, A251, B251, C252, D252, E252, F#252, G#252, A252, B252, C253, D253, E253, F#253, G#253, A253, B253, C254, D254, E254, F#254, G#254, A254, B254, C255, D255, E255, F#255, G#255, A255, B255, C256, D256, E256, F#256, G#256, A256, B256, C257, D257, E257, F#257, G#257, A257, B257, C258, D258, E258, F#258, G#258, A258, B258, C259, D259, E259, F#259, G#259, A259, B259, C260, D260, E260, F#260, G#260, A260, B260, C261, D261, E261, F#261, G#261, A261, B261, C262, D262, E262, F#262, G#262, A262, B262, C263, D263, E263, F#263, G#263, A263, B263, C264, D264, E264, F#264, G#264, A264, B264, C265, D265, E265, F#265, G#265, A265, B265, C266, D266, E266, F#266, G#266, A266, B266, C267, D267, E267, F#267, G#267, A267, B267, C268, D268, E268, F#268, G#268, A268, B268, C269, D269, E269, F#269, G#269, A269, B269, C270, D270, E270, F#270, G#270, A270, B270, C271, D271, E271, F#271, G#271, A271, B271, C272, D272, E272, F#272, G#272, A272, B272, C273, D273, E273, F#273, G#273, A273, B273, C274, D274, E274, F#274, G#274, A274, B274, C275, D275, E275, F#275, G#275, A275, B275, C276, D276, E276, F#276, G#276, A276, B276, C277, D277, E277, F#277, G#277, A277, B277, C278, D278, E278, F#278, G#278, A278, B278, C279, D279, E279, F#279, G#279, A279, B279, C280, D280, E280, F#280, G#280, A280, B280, C281, D281, E281, F#281, G#281, A281, B281, C282, D282, E282, F#282, G#282, A282, B282, C283, D283, E283, F#283, G#283, A283, B283, C284, D284, E284, F#284, G#284, A284, B284, C285, D285, E285, F#285, G#285, A285, B285, C286, D286, E286, F#286, G#286, A286, B286, C287, D287, E287, F#287, G#287, A287, B287, C288, D288, E288, F#288, G#288, A288, B288, C289, D289, E289, F#289, G#289, A289, B289, C290, D290, E290, F#290, G#290, A290, B290, C291, D291, E291, F#291, G#291, A291, B291, C292, D292, E292, F#292, G#292, A292, B292, C293, D293, E293, F#293, G#293, A293, B293, C294, D294, E294, F#294, G#294, A294, B294, C295, D295, E295, F#295, G#295, A295, B295, C296, D296, E296, F#296, G#296, A296, B296, C297, D297, E297, F#297, G#297, A297, B297, C298, D298, E298, F#298, G#298, A298, B298, C299, D299, E299, F#299, G#299, A299, B299, C300, D300, E300, F#300, G#300, A300, B300, C301, D301, E301, F#301, G#301, A301, B301, C302, D302, E302, F#302, G#302, A302, B302, C303, D303, E303, F#303, G#303, A303, B303, C304, D304, E304, F#304, G#304, A304, B304, C305, D305, E305, F#305, G#305, A305, B305, C306, D306, E306, F#306, G#306, A306, B306, C307, D307, E307, F#307, G#307, A307, B307, C308, D308, E308, F#308, G#308, A308, B308, C309, D309, E309, F#309, G#309, A309, B309, C310, D310, E310, F#310, G#310, A310, B310, C311, D311, E311, F#311, G#311, A311, B311, C312, D312, E312, F#312, G#312, A312, B312, C313, D313, E313, F#313, G#313, A313, B313, C314, D314, E314, F#314, G#314, A314, B314, C315, D315, E315, F#315, G#315, A315, B315, C316, D316, E316, F#316, G#316, A316, B316, C317, D317, E317, F#317, G#317, A317, B317, C318, D318, E318, F#318, G#318, A318, B318, C319, D319, E319, F#319, G#319, A319, B319, C320, D320, E320, F#320, G#320, A320, B320, C321, D321, E321, F#321, G#321, A321, B321, C322, D322, E322, F#322, G#322, A322, B322, C323, D323, E323, F#323, G#323, A323, B323, C324, D324, E324, F#324, G#324, A324, B324, C325, D325, E325, F#325, G#325, A325, B325, C326, D326, E326, F#326, G#326, A326, B326, C327, D327, E327, F#327, G#327, A327, B327, C328, D328, E328, F#328, G#328, A328, B328, C329, D329, E329, F#329, G#329, A329, B329, C330, D330, E330, F#330, G#330, A330, B330, C331, D331, E331, F#331, G#331, A331, B331, C332, D332, E332, F#332, G#332, A332, B332, C333, D333, E333, F#333, G#333, A333, B333, C334, D334, E334, F#334, G#334, A334, B334, C335, D335, E335, F#335, G#335, A335, B335, C336, D336, E336, F#336, G#336, A336, B336, C337, D337, E337, F#337, G#337, A337, B337, C338, D338, E338, F#338, G#338, A338, B338, C339, D339, E339, F#339, G#339, A339, B339, C340, D340, E340, F#340, G#340, A340, B340, C341, D341, E341, F#341, G#341, A341, B341, C342, D342, E342, F#342, G#342, A342, B342, C343, D343, E343, F#343, G#343, A343, B343, C344, D344, E344, F#344, G#344, A344, B344, C345, D345, E345, F#345, G#345, A345, B345, C346, D346, E346, F#346, G#346, A346, B346, C347, D347, E347, F#347, G#347, A347, B347, C348, D348, E348, F#348, G#348, A348, B348, C349, D349, E349, F#349, G#349, A349, B349, C350, D350, E350, F#350, G#350, A350, B350, C351, D351, E351, F#351, G#351, A351, B351, C3

Baritone Saxophone

OkMEA Scale Sets

Set 1

Concert
A



Concert
Db



Concert
Eb
Chromatic



Horn in F

OkMEA Scale Sets

Set 1

Concert
A

Musical staff for Concert A, Set 1. Treble clef, key signature of three sharps (F#, C#, G#), 4/4 time signature. The scale starts on A4 and ends on A5 with a fermata.

6

Concert
Db

Musical staff for Concert Db, Set 1. Treble clef, key signature of four flats (Bb, Eb, Ab, Db), 4/4 time signature. The scale starts on D4 and ends on D5 with a fermata.

11

Concert
C
Chromatic

Musical staff for Concert C Chromatic, Set 1. Treble clef, key signature of C major, 4/4 time signature. Chromatic scale from C4 to C5.

13

Musical staff for Concert C Chromatic, Set 1. Treble clef, key signature of C major, 4/4 time signature. Chromatic scale from C4 to C5.

Set 2

15

Concert
D

Musical staff for Concert D, Set 2. Treble clef, key signature of two sharps (F#, C#), 4/4 time signature. The scale starts on D4 and ends on D5 with a fermata.

20

Concert
Gb

Musical staff for Concert Gb, Set 2. Treble clef, key signature of three flats (Bb, Eb, Ab), 4/4 time signature. The scale starts on Gb4 and ends on Gb5 with a fermata.

25

Concert
C
Chromatic

Musical staff for Concert C Chromatic, Set 2. Treble clef, key signature of C major, 4/4 time signature. Chromatic scale from C4 to C5.

27

Musical staff for Concert C Chromatic, Set 2. Treble clef, key signature of C major, 4/4 time signature. Chromatic scale from C4 to C5.

29 Set 3

Concert G

34

39

Concert C Chromatic

41

Set 4

43

Concert C

48

53

Concert C Chromatic

55

Baritone T.C.

OkMEA Scale Sets

Set 1

Concert
A



Baritone T.C.

Set 3

Concert
G

Musical staff for Concert G, Set 3. The staff is in treble clef with a key signature of two sharps (F# and C#). The melody consists of a series of eighth and quarter notes, ending with a quarter rest.

Concert
Cb

Musical staff for Concert Cb, Set 3. The staff is in treble clef with a key signature of three flats (Bb, Eb, and Ab). The melody consists of a series of eighth and quarter notes, ending with a quarter rest.

Concert
Bb
Chromatic

Musical staff for Concert Bb Chromatic, Set 3. The staff is in treble clef with a key signature of two flats (Bb and Eb). The melody is a chromatic scale consisting of eighth notes, ending with a quarter rest.

Musical staff for Concert Bb Chromatic, Set 3 (continued). The staff is in treble clef with a key signature of two flats (Bb and Eb). The melody is a chromatic scale consisting of eighth notes, ending with a quarter rest.

Set 4

Concert
C

Musical staff for Concert C, Set 4. The staff is in treble clef with a key signature of one sharp (F#). The melody consists of a series of eighth and quarter notes, ending with a quarter rest.

Concert
E

Musical staff for Concert E, Set 4. The staff is in treble clef with a key signature of four sharps (F#, C#, G#, and D#). The melody consists of a series of eighth and quarter notes, ending with a quarter rest.

Concert
Bb
Chromatic

Musical staff for Concert Bb Chromatic, Set 4. The staff is in treble clef with a key signature of two flats (Bb and Eb). The melody is a chromatic scale consisting of eighth notes, ending with a quarter rest.

Musical staff for Concert Bb Chromatic, Set 4 (continued). The staff is in treble clef with a key signature of two flats (Bb and Eb). The melody is a chromatic scale consisting of eighth notes, ending with a quarter rest.

Set 3
Euphonium

Concert
G

Musical staff for Concert G, Euphonium part. The staff is in bass clef with a key signature of one sharp (F#). The melody consists of a series of eighth notes, starting on G2 and ascending to G3, then descending back to G2. The piece ends with a whole note G2 and a fermata.

Concert
B

Musical staff for Concert B, Euphonium part. The staff is in bass clef with a key signature of two sharps (F#, C#). The melody consists of a series of eighth notes, starting on B2 and ascending to B3, then descending back to B2. The piece ends with a whole note B2 and a fermata.

Concert
Bb
Chromatic

Musical staff for Concert Bb Chromatic, Euphonium part. The staff is in bass clef with a key signature of two flats (Bb, Eb). The melody is a chromatic scale starting on Bb2 and ascending to Bb3, then descending back to Bb2. The piece ends with a whole note Bb2 and a fermata.

Musical staff for Concert Bb Chromatic, Euphonium part. This staff continues the chromatic scale from the previous staff, starting on Bb2 and ascending to Bb3, then descending back to Bb2. The piece ends with a whole note Bb2 and a fermata.

Set 4

Concert
C

Musical staff for Concert C, Euphonium part. The staff is in bass clef with a key signature of no sharps or flats (C). The melody consists of a series of eighth notes, starting on C2 and ascending to C3, then descending back to C2. The piece ends with a whole note C2 and a fermata.

Concert
E

Musical staff for Concert E, Euphonium part. The staff is in bass clef with a key signature of four sharps (F#, C#, G#, D#). The melody consists of a series of eighth notes, starting on E2 and ascending to E3, then descending back to E2. The piece ends with a whole note E2 and a fermata.

Concert
Bb
Chromatic

Musical staff for Concert Bb Chromatic, Euphonium part. The staff is in bass clef with a key signature of two flats (Bb, Eb). The melody is a chromatic scale starting on Bb2 and ascending to Bb3, then descending back to Bb2. The piece ends with a whole note Bb2 and a fermata.

Musical staff for Concert Bb Chromatic, Euphonium part. This staff continues the chromatic scale from the previous staff, starting on Bb2 and ascending to Bb3, then descending back to Bb2. The piece ends with a whole note Bb2 and a fermata.

OkMEA Scale Sets

Trombone

Set 1

Concert
A



Concert
Db



Concert
Bb
Chromatic



Set 2

Concert
D



Concert
Gb



Concert
Bb
Chromatic



Set 3

2

Trombone

Concert
G



OkMEA Scale Sets

Tuba

Set 1

Concert
A



Set 3

Concert
G

A single musical staff in bass clef with a key signature of one sharp (F#). The melody consists of a series of eighth notes, starting on G2 and ascending to G3, followed by a quarter rest and a final G2 note.

Concert
B

A single musical staff in bass clef with a key signature of two sharps (F# and C#). The melody consists of a series of eighth notes, starting on B1 and ascending to B2, followed by a quarter rest and a final B1 note.

Concert
Bb
Chromatic

A single musical staff in bass clef with a key signature of two flats (Bb and Eb). The melody is a chromatic scale consisting of a series of eighth notes, starting on Bb1 and ascending to Bb2, followed by a quarter rest and a final Bb1 note.

A single musical staff in bass clef with a key signature of two flats (Bb and Eb). The melody is a chromatic scale consisting of a series of eighth notes, starting on Bb1 and ascending to Bb2, followed by a quarter rest and a final Bb1 note.

Set 4

Concert
C

A single musical staff in bass clef with a key signature of no sharps or flats. The melody consists of a series of eighth notes, starting on C2 and ascending to C3, followed by a quarter rest and a final C2 note.

Concert
E

A single musical staff in bass clef with a key signature of one sharp (F#). The melody consists of a series of eighth notes, starting on E1 and ascending to E2, followed by a quarter rest and a final E1 note.

Concert
Bb
Chromatic

A single musical staff in bass clef with a key signature of two flats (Bb and Eb). The melody is a chromatic scale consisting of a series of eighth notes, starting on Bb1 and ascending to Bb2, followed by a quarter rest and a final Bb1 note.

A single musical staff in bass clef with a key signature of two flats (Bb and Eb). The melody is a chromatic scale consisting of a series of eighth notes, starting on Bb1 and ascending to Bb2, followed by a quarter rest and a final Bb1 note.